

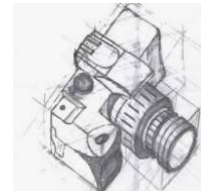
TYPES OF DESIGN DRAWINGS

Key Revision Facts: GCSE Technology

There are a range of different types of design drawings

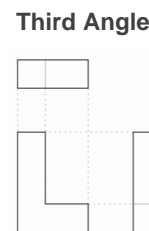
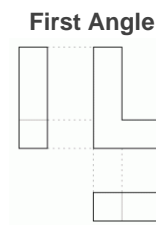
Freehand

A freehand drawing is drawn without using instruments such as a ruler or a pair of compasses.



Orthographic Projection

Orthographic Projection is a method of drawing a 3D object from different directions. Usually, a front, side, and plan view are drawn from each side's important details to be shown. There are two ways of drawing in orthographic - First Angle and Third Angle. They differ only in the position of the plan, front and side views.

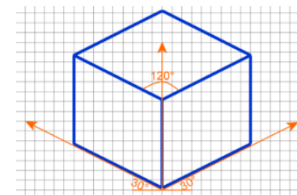


Working drawings

Working drawings contain the information needed to make an object, including: dimensions, components, materials, and assembly instructions.

Isometric Drawing

An isometric drawing is a type of 3D drawing that is set out using 30-degree angles.

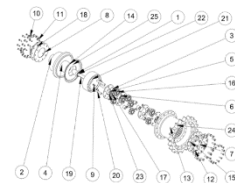


Perspective Drawing

Perspective Drawing is a technique used in art and design to represent three-dimensional images on a two-dimensional picture plane. Any perspective representation of a scene that includes parallel lines has one or more vanishing points in a perspective drawing.

Exploded Diagram

An exploded-view is commonly used for assembly drawings to show the relationship between different components and how they fit together.



System Diagram

A system diagram is a visual model of a system, its components, and its interactions.

Schematic Diagram

Schematic diagrams use symbols to show the layout of electrical or mechanical systems. A circuit diagram is a schematic that shows how components are connected.

DOWNLOAD

More Key Fact Revision sheets can be downloaded from

www.andrew-seaford.co.uk/revision

VERSION INFORMATION

Date	Arthur	Comment
13-Mar-2021	Andrew Seaford	Initial release.